



Chancellors Hall

The Chester II

The Chester II

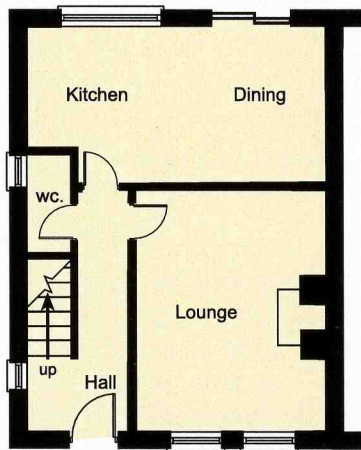
The Chester is a delightful semi-detached home of approximately 920sq ft, built in the style of the Georgian era.

The spacious layout blends features of modern living with simple period style charm. The impressive entrance leads into a bright hall with cloakroom which includes a wc. The ground floor also boasts a bright lounge and an open plan kitchen and dining area.

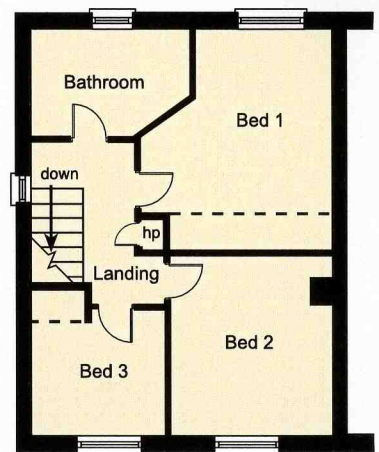
On the first floor there are 3 superb bedrooms and a bathroom. The layout also provides french doors as standard, oil fired central heating and built in wardrobe spaces.



This is an Artists impression and as such, the elevation shown may vary from the actual finish on site.



Ground Floor



First Floor

Ground Floor

Entrance Hall. Cloaks with wc.

Lounge 15'2" x 11'11"

Kitchen/Dining..... 18'5" x 9'10"

First Floor

Bedroom 1..... 13'9" x 11'10"

Bedroom 3..... 11'2" x 10'3"

Bedroom 3..... 7'10" x 7'10"

Bathroom

These particulars do not constitute any part of an offer or contract. None of the statements contained in these particulars are to be relied on as statements or representations of fact and intending purchasers must satisfy themselves by inspection or otherwise as to the correctness of each of the statements contained in these particulars. Configurations of kitchens, bathrooms wardrobes etc. may be subject to alteration from those illustrated without prior notification. Purchasers should satisfy themselves as to the current specification at the time of booking. The Vendor does not make or give, and neither the selling Agent, nor any person in their in their employment, has any authority to make or give any representation or warranty whatever in relation to any property. Artist's impressions and photographs are for illustration only. Plans are not to scale and all dimensions shown are approximate

